


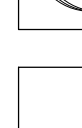


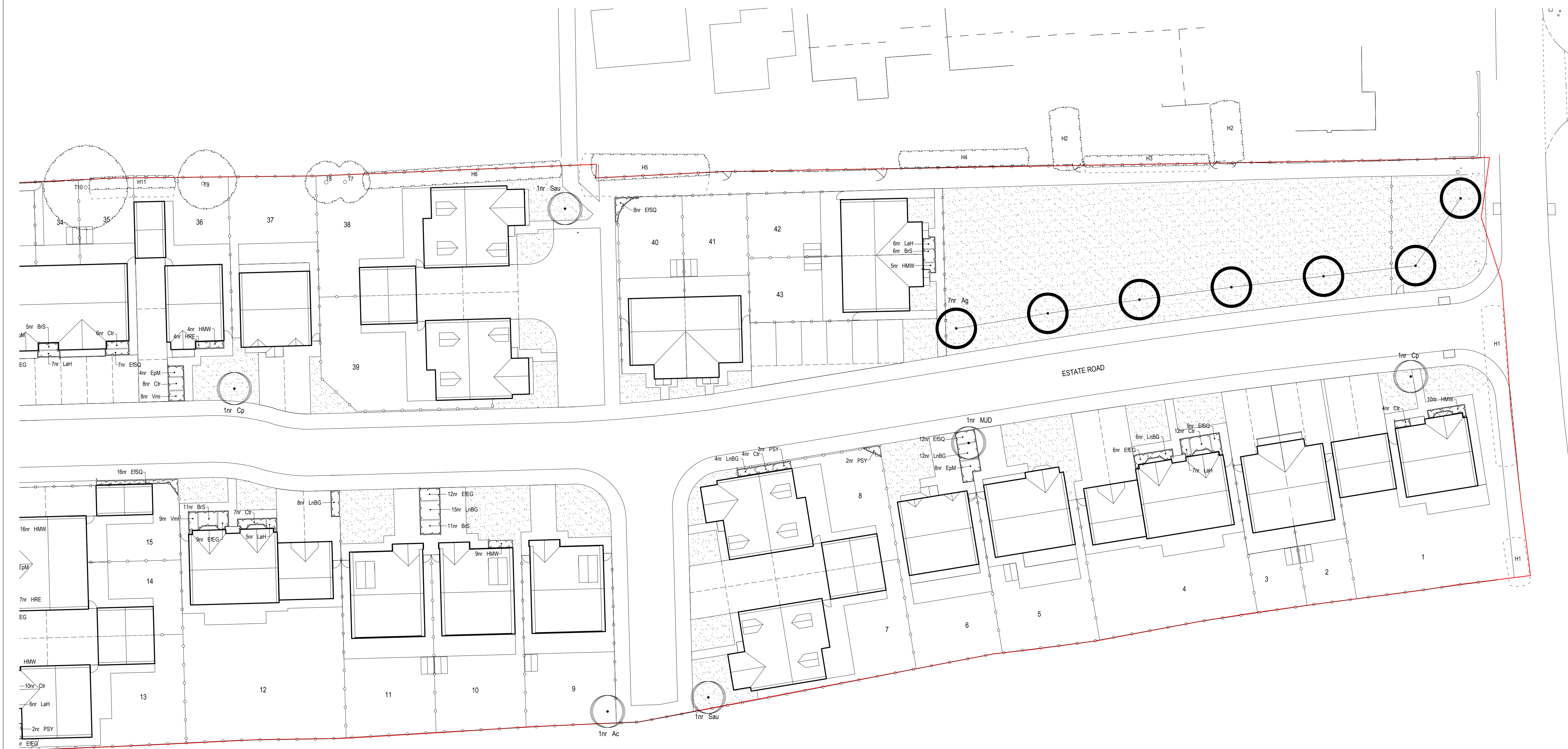
	Site boundary
	Existing tree to be retained
	Existing tree (to be trimmed back)
	Proposed tree Standard (Heavy)
	Proposed tree Standard (Selected)
	Proposed shrub bed
	Proposed grass



Proposed Trees								
Nr	Code	Plant Name	Form	Ht(cm)	Grth(cm)	CStrn(cm)	Root	Canopy
3	Ac	Acer campestre	Standard (Selected)	300-350	10-12	175-200	RB	45
7	Ag	Aulus glutinosus	Standard (Heavy)	350-425	12-14	175-200	C	
5	Cp	Crataegus prunifolia	Standard (Selected)	300-350	10-12	175-200	RB	
5	MJD	Malus 'John Downie'	Standard (Selected)	300-350	10-12	175-200	RB	
5	Sau	Sorbus aucuparia	Standard (Selected)	300-350	10-12	175-200	RB	

Proposed Shrubs						
Nr	Code	Plant Name	H(cm)	Root	Contr†	N/m
46	B/S	<i>Brachyotrys</i> 'Sunshine'	30-40	C	5	3.00
64	Cr	<i>Ceanothus thyrsiflorus</i> repens	30-40	C	5	3.00
39	EPm	<i>Elaeagnus pungens</i> 'Maculata'	30-40	C	5	2.00
116	EFE	<i>Eunonymus fortunei</i> 'Emerald 'n' Gold'	20-30	C	5	4.00
71	EFISQ	<i>Eunonymus fortunei</i> 'Silver Queen'	20-30	C	5	4.00
101	HMW	<i>Hebe</i> 'Reds Wine'	20-30	C	5	4.00
30	HRE	<i>Hebe</i> 'Red Edge'	20-30	C	5	4.00
48	LAh	<i>Laundaria angustifolia</i> 'Hidcote'	20-30	C	5	4.00
198	LnBG	<i>Lonicera nidica</i> 'Baggesen's Gold'	30-40	C	5	3.00
18	PSY	<i>Pyracantha</i> 'Saphyr Yellow'	40-60	C	5	2.00
50	Vmi	<i>Vinca minor</i>	15-20	C	5	4.00

Email [design@rosettalandscap.co.uk](mailto:design@rosettalandscap.co.uk)  
Web [www.rosettalandscap.co.uk](http://www.rosettalandscap.co.uk)