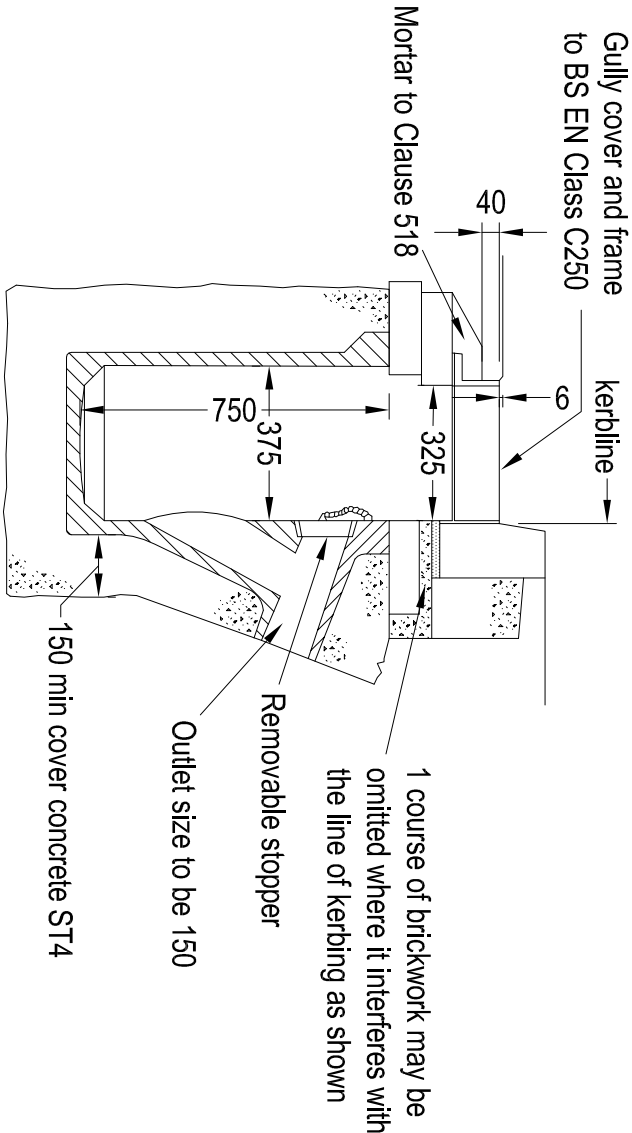
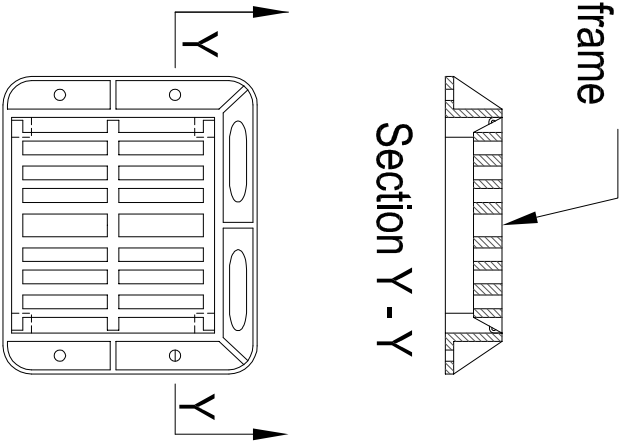


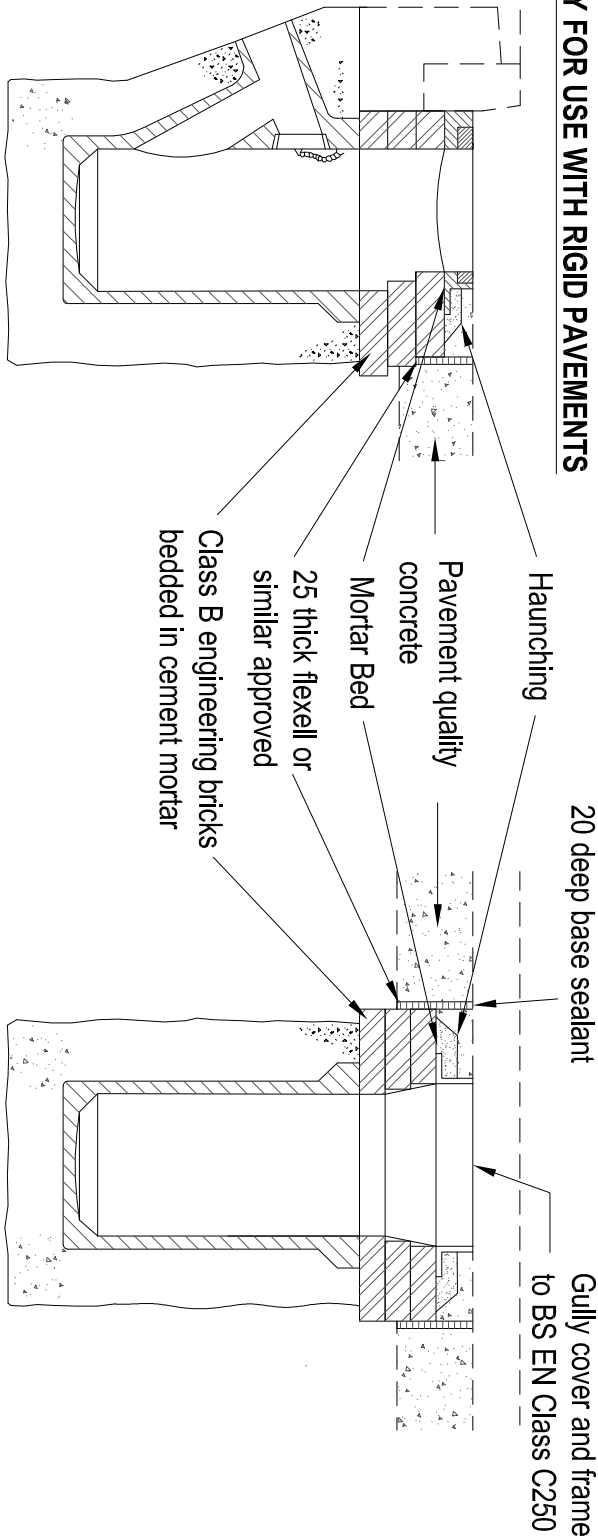
A. GULLY FOR USE WITH FLEXIBLE PAVEMENTS



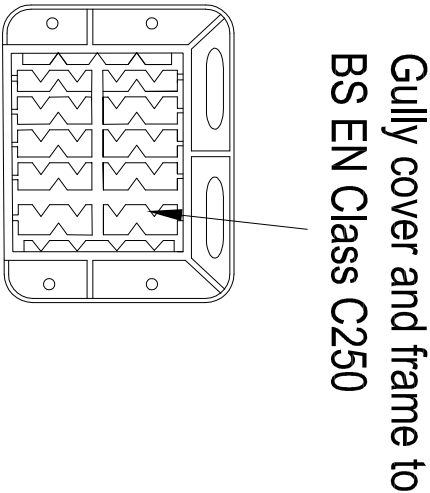
Gully cover and frame to BS
EN Class C250
(Heavy Duty cover and frame
to BS EN Class D400)



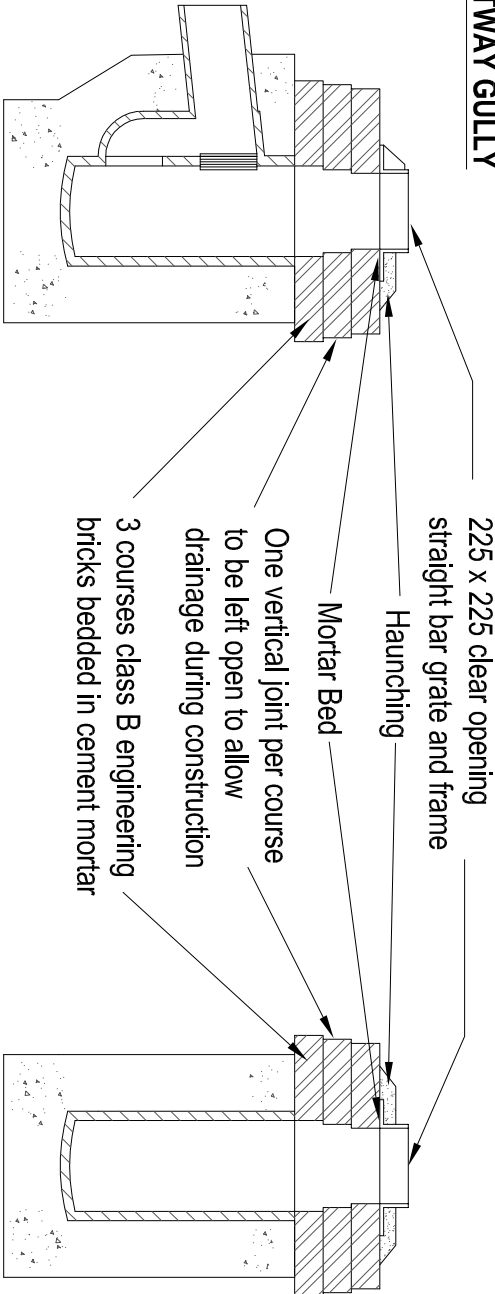
B. GULLY FOR USE WITH RIGID PAVEMENTS



Typical cover and frame



C. FOOTWAY GULLY



Typical pedestrianised cover and frame

- NOTES:**
1. All gully pots to be manufactured in precast concrete, SGW or UPVC
 2. Concrete to be 150 thick ST4 to CI 516
 3. Pedestrianised gully covers and frames to BS EN 124 Class C250 to be used in shared access roads and at pedestrian crossing facilities.
 4. For Industrial Estate Roads Heavy Duty gully covers and frames to BS EN 124 Class D400 are to be used.